

Clausing Radial Drills

Models CLC1250 CLC1600



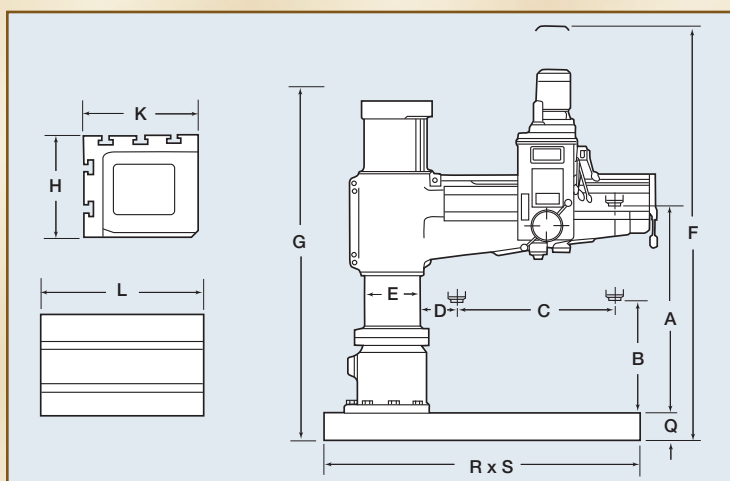
Features and Standard Equipment:

- Equipped with hydraulic Step-by-Step clamping system, with proper selection on push button switch. Column, arm, gear box can be clamped/released independently. Very easy to be operated, and tools will always stay at the same point after tools shifting.
- Gears in gear box are cooled by oil cycled by an oil pump to minimize gear wear.
- Friction type disc clutch absorbs impact force caused by vertical movement of spindle, and protects all transmission units inside gear box. With quick spindle return, the clutch will help speed-up the tapping operation.
- Specially designed manual tools ejector (drift).
- Special arm elevating device is provided to prevent arm from falling down abruptly after years of usage.
- Speed preselection, speed change is hydraulically actuated. Fast and very easy to operate.
- Coolant System
- Tool kit and manuals

Specifications:

Model	CLC1250	CLC1600
Working Area		
Column Sleeve Dia (E)	13.78" (350mm)	13.78" (350mm)
Column Face to Spindle Center		
Maximum (D+C)	49.2" (1250mm)	63" (1600mm)
Minimum (D)	13.78" (350mm)	13.78" (350mm)
Spindle Head Travel (C)	35.4" (900mm)	49.2" (1250mm)
Base Surface to Spindle End		
Maximum (A)	48" (1220mm)	48" (1220mm)
Minimum (B)	13.4" (340mm)	13.4" (340mm)
Arm Vertical Travel (A-B)	22.2" (565mm)	22.2" (565mm)
Arm Rotation (Right & Left)	180°	180°
Baseplate Working Surface	55.3"x 38.6" (1405mmx980mm)	55.3"x 38.6" (1405mmx980mm)
Box Table Area		
Length (L)	25.0" (635mm)	25.0" (635mm)
Width (K)	19.7" (500mm)	19.7" (500mm)
Height (H)	19.7" (500mm)	19.7" (500mm)
Base Dimensions		
Floor Area (R x S)	80"x38.6" (2030mmx980mm)	93.7"x38.6" (2380mmx980mm)
Height (Q)	8.1" (205mm)	8.1" (205mm)
Drilling Head		
Spindle Taper	MT#5	MT#5
Spindle Stroke	12.4" (315mm)	12.4" (315mm)
Quill Diameter	3.15" (80mm)	3.15" (80mm)
Number of Spindle Speeds	16	16
Spindle Speeds (rpm)	25-2000	25-2000
Number of Steps	16	16
Spindle Feed Rate (in/mm/rev.)	0.002"(.04mm)-0.126" (3.2mm)	
Spindle Drive Motor (2-speed)	5 hp (2.75 Kw)	5 hp (2.75 Kw)
Elevating Motor	2 hp (1.5 Kw)	2 hp (1.5 Kw)
Clamping Motor	1 hp (.75 Kw)	1 hp (.75 Kw)
Coolant Pump Motor	1/8 hp (.10 Kw)	1/8 hp (.10 Kw)
Overall Measurements and Weight		
Max. Machine Height (F)	110.6" (2810mm)	110.6" (2810mm)
Base and Column Height (G)	102.4" (2600mm)	102.4" (2600mm)
Shipping Dim.		
Length	88" (2235mm)	102" (2590mm)
Width	48" (1220mm)	48" (1220mm)
Height	100" (2540mm)	100" (2540mm)
Net Weight	6,614 lbs (3000kg)	7,716 lbs (3500kg)
Shipping Weight	7,804 lbs (3540kg)	9,039 lbs (4100kg)

Dimensions:



Capacities:

Model		CLC1250	CLC1600
Drilling	In Steel	2" (50mm)	2" (50mm)
	In Cast Iron	2.36" (60mm)	2.36" (60mm)
Tapping	In Steel	1.77" (45mm)	1.77" (45mm)
	In Cast Iron	2.17" (55mm)	2.17" (55mm)
Boring	In Steel	4.33" (110mm)	4.33" (110mm)
	In Cast Iron	6.5" (165mm)	6.5" (165mm)