

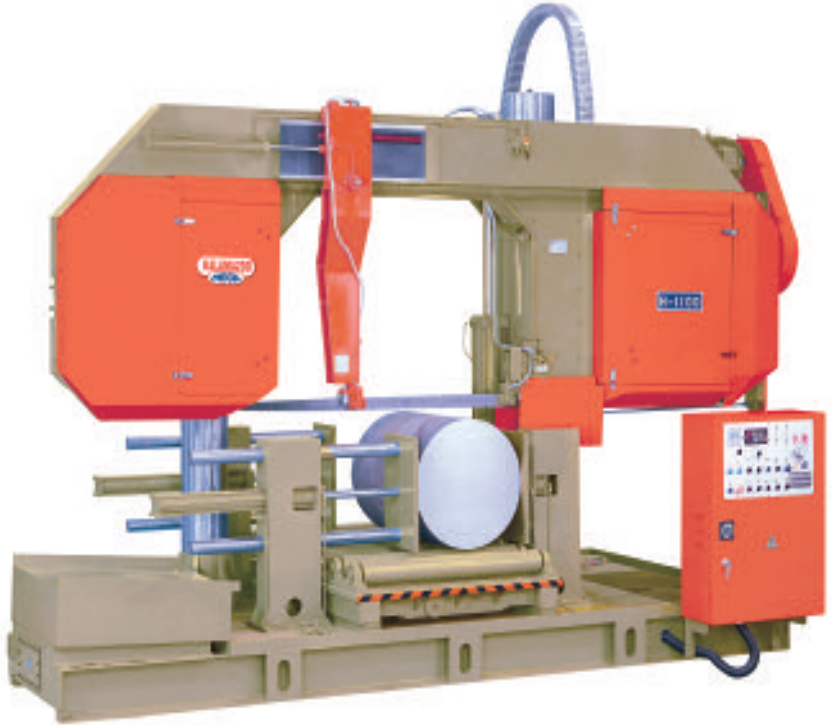
H1080A/H1100A H1300A/H1613A



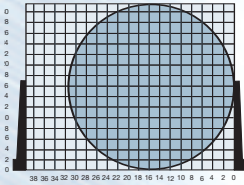
23", 29", 31", 43" & 51" Double Column Bandsaws

Features:

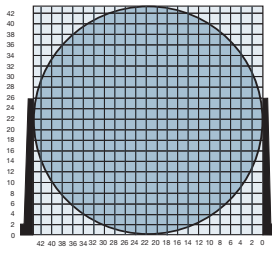
- ▼ Variable speed drive
- ▼ Automatic head elevation control
- ▼ Amplify valve/auto adjust cut feed rate
- ▼ Power-driven blade cleaning brush and coolant cleaning flush hose
- ▼ Idle wheel motion detector blade jam
- ▼ Carbide and roller blade guides to ensure perfect alignment and straight cuts
- ▼ Hydraulic quick-action vise jaws
- ▼ Hydraulic shuttle vise for infeed and outfeed of stock
- ▼ Hydraulic blade tension, blade tension is reduced at shut-off
- ▼ Double hydraulic vise to clamp both sides of the saw blade
- ▼ Double column frame guidance
- ▼ Guarded blades and wheel covers
- ▼ Blade, tools and tool box, manual
- ▼ Two year limited warranty



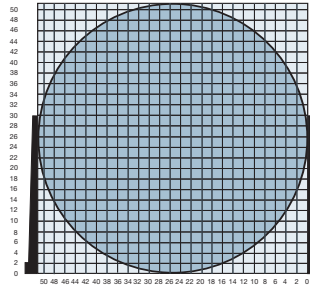
Cutting Capacities:



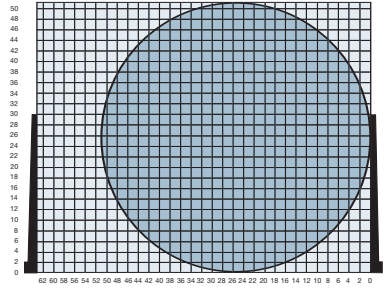
H1080A



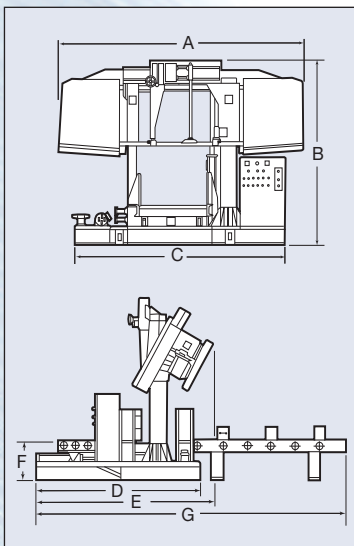
H1100A



H1300A



H1613A



Model	H1080A	H1100A	H1300A	H1613A
Drive Motor*	15 hp, 230/460v 3 ph	15 hp, 230/460v 3 ph	20 hp, 230/460v 3 ph	20 hp, 230/460v 3 ph
Hydraulic Motor	3 hp	3 hp	5 hp	5 hp
Coolant Motor	1/4 hp	1/4 hp	1/4 hp	1/4 hp
Hydraulic oil capacity	40 gal.	40 gal.	39 gal.	39 gal.
Bandwheel Dia.	37.6"	45.3"	53.1"	53.1"
Blade Speeds	39-213 fpm	39-213 fpm	39-197 fpm	39-197 fpm
Blade Size	2.5" x .063 x 28'-10"	3.15" x .063 x 35'-6"	3.15" x .063 x 40-4.25"	3.15" x .063 x 42.3.87"
Coolant	Recirculating	Recirculating	Recirculating	Recirculating
Coolant Capacity	28 gal	35 gal	33 gal	33 gal
Cutting Capacity				
Round	31.5"	43.31"	51.18"	51.18"
Rectangular	39.37"W x 31.5"H	43.31"W x 43.31"H	51.18"W x 51.18"H	63"W x 51.18"H
Width (A)	161.4"	204.7"	208.7"	225.6"
Height (B)	120.9"	135.3"	140.6"	151.1"
Base Width (C)	137.8"	179.8"	169.7"	203.4"
Base Depth (D)	90.6"	86.6"	94.5"	102.3"
Depth (E)	88.31"	86.61"	84.65"	98.31"
Bed Height (F)	23.6"	24.9"	24"	25.6"
Depth (G)**	220.5"	237.4"	224.4"	259.8
Net Weight**	18,817 lbs.	25,464 lbs.	35,206 lbs.	42,930 lbs.
Shipping Weight**	21,022 lbs.	28,110 lbs.	41,200 lbs.	49,930 lbs.

*Other voltages optional

** Depth with optional infeed roller table

Specifications are subject to change without notice